

Reallocate resources to improve community-based primary care and support complex tertiary services that our aging population requires

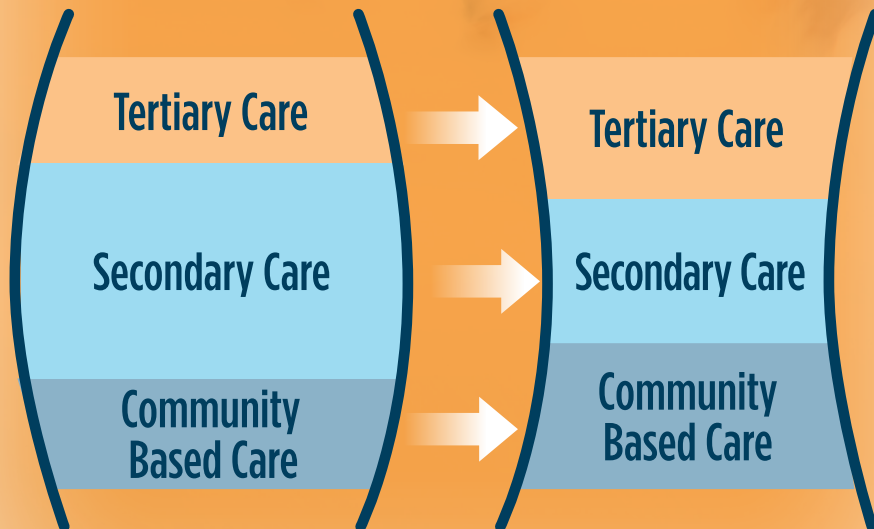
New Brunswick's shifting demographics and the incidence of chronic diseases within its population all point to the need for better preventive, primary, long-term and palliative care in communities across the province.

Improved community-based care will better help Horizon achieve its first priority of delivering patient and family

centred care. It will enable more prevention initiatives to help New Brunswickers remain healthy.

Consistent with the transition to improved community-based care, tertiary care services require similar reallocation of resources to secure the infrastructure, workforce and technology to deal with this demographic trend.

Reallocation of Resources



Tertiary Care - innovative and specialized technology, treatment and services
Secondary Care - acute, often hospital-based, care and services
Community Based Care - the care you need in your home and community

Program growth must reflect aging population profiles which requires:



Chronic Care



Community Care



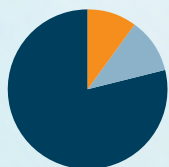
Cardiac Care



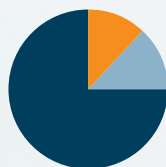
Cancer Care



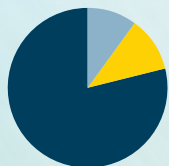
Healthy Aging



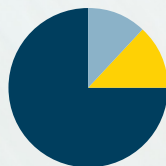
Community-based care now 10% of budget (\$111M)



By 2020, a transfer of 2% (\$23 million) from other areas to Community Care

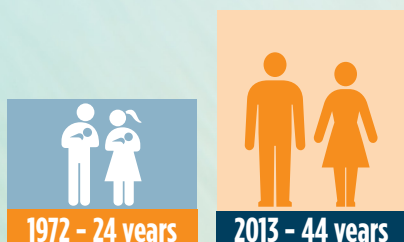


Tertiary care now 11% (\$120M)



By 2020, a transfer of 2% (\$25 million) from other areas to tertiary care

Infrastructure must adapt to new care needs – older population



By 2020, 100% of population will have clearly defined primary care provider



By 2020, Horizon will have five additional Family Health teams



By 2020, 95% of tertiary services will be available for patients within the province.

(fewer referrals to Nova Scotia and Quebec)



By 2016, 100% will have had a recent community health needs assessment